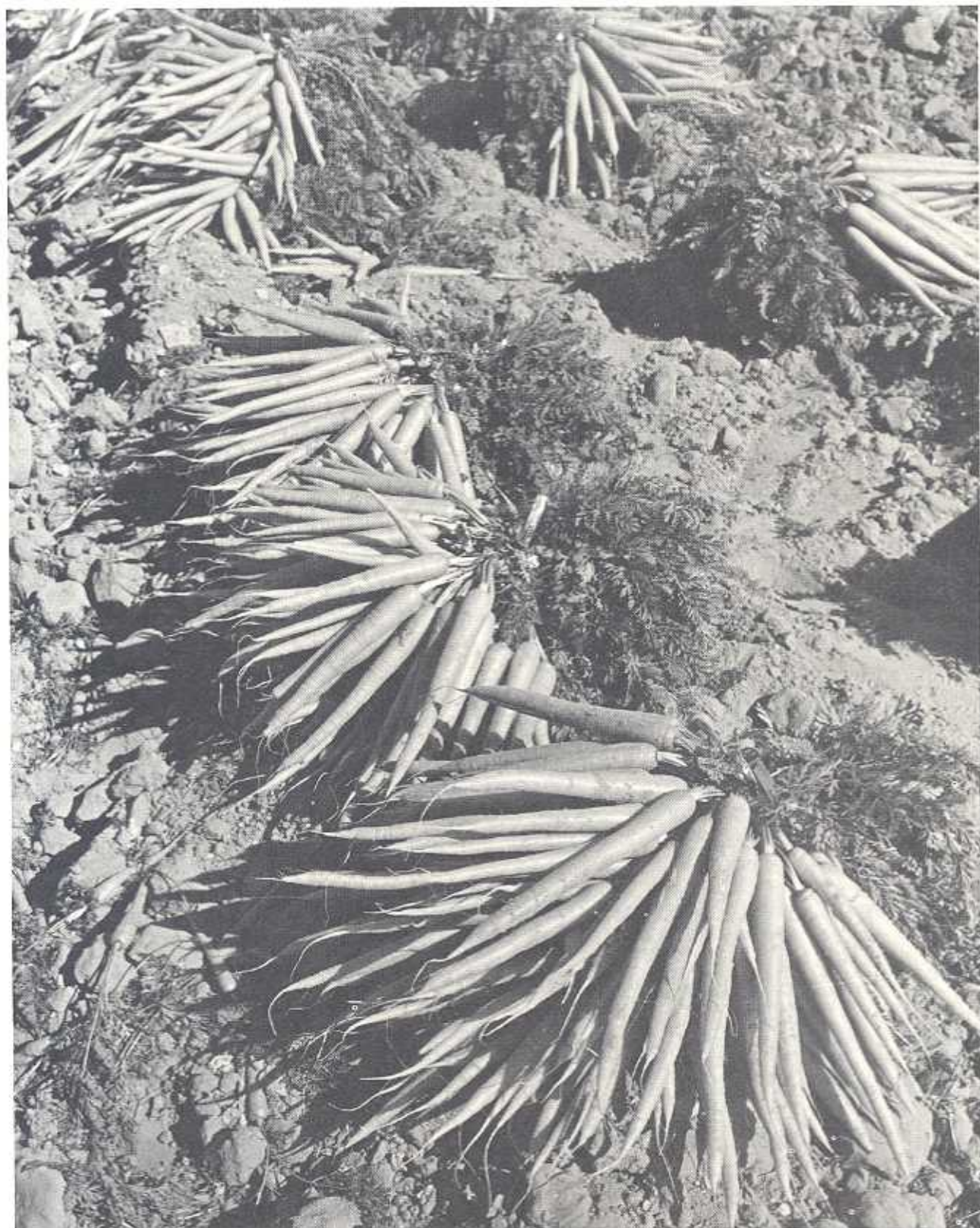


# Imperial County Agriculture — 1983



OFFICE OF THE  
**AGRICULTURAL COMMISSIONER**

CLAUDE M. FINNELL  
COMMISSIONER - DIRECTOR - APCO

DARRELL E. BYRD  
CHIEF DEPUTY COMMISSIONER - DIRECTOR  
ASSISTANT APCO

COURTHOUSE  
939 MAIN STREET  
EL CENTRO, CALIFORNIA 92243  
(619) 328-4314

# IMPERIAL COUNTY

OFFICE OF

AGRICULTURAL COMMISSIONER  
DIRECTOR OF WEIGHTS AND MEASURES  
AIR POLLUTION CONTROL OFFICER

TO: MR. CLARE BERRYHILL, DIRECTOR  
DEPARTMENT OF FOOD AND AGRICULTURE  
STATE OF CALIFORNIA

and

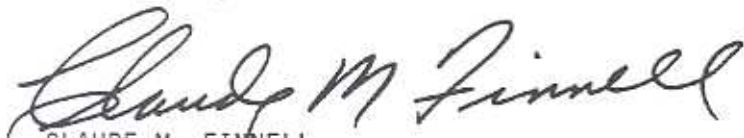
THE HONORABLE BOARD OF SUPERVISORS  
COUNTY OF IMPERIAL

I herewith submit the annual crop report as required by Section 2279 of the Food and Agricultural Code.

While the national economy seems to be moving ahead rapidly, the Imperial County agricultural economy seems to be in a holding pattern. The gross agricultural income for the past three years has been almost static. The 1983 gross income of \$755,166,000 is slightly lower than the 1982 gross income of \$761,980,000. If the PIK payments of approximately \$23,000,000 are added, the gross farm income is up slightly. The contribution of 3/4 billion dollars to the local economy, however, is still tremendous.

Although Imperial County farmers face many problems, such as new pests, water, and marketing, this is still a great place to farm.

Respectfully submitted,



CLAUDE M. FINNELL  
Agricultural Commissioner

## IMPERIAL COUNTY BOARD OF SUPERVISORS

Louis Curiel, Chairman

Val Blume

Abe F. Seabolt

James Bucher

Luis M. Legaspi





### FIELD CROPS 1982-1983

	YEAR	ACRES	YIELD PER ACRE	UNITS	TOTAL UNITS	VALUE PER UNIT	VALUE
Alfalfa	1983	24,527	9.56	Ton	234,478	96.80	22,697,000
(Cube and Dehydrated)	1982	15,038	6.30	Ton	94,739	87.00	8,242,000
Alfalfa Hay	1983	138,986	8.56	Ton	1,189,720	88.00	104,695,000
	1982	136,710	9.01	Ton	1,231,757	69.00	84,991,000
Alfalfa (Pasture)	1983	104,236	#	Acre		58.00	C 6,046,000
	1982	102,532	#	Acre		50.00	5,127,000
Barley	1983	1,671	2.18	Ton	3,643	130.00	474,000
	1982	2,405	2.18	Ton	5,243	110.00	577,000
Cotton (Lint)	1983	26,992	2.80A	Bales	75,578	425.00B	32,120,000
	1982	51,216	2.40A	Bales	123,032	360.00B	44,292,000
Cotton (Seed)	1983	26,992	1.12	Ton	30,231	135.00	4,081,000
	1982	51,216	.96	Ton	49,212	100.00	4,921,000
PASTURE:							
Sugar Beet Top	1983	29,011	#	Acre		40.00	C 1,160,000
	1982	26,535	#	Acre		40.00	1,054,000
Ryegrass	1983	2,543	#	Acre		200.00	C 509,000
	1982	2,497	#	Acre		200.00	499,000
Other Pasture	1983	3,180	#	Acre		55.00	C 175,000
	1982	8,351	#	Acre		55.00	459,000
Total Pasture	1983	34,734		Acre			C 7,890,000
	1982	37,383		Acre			2,012,000
Sorghum (Grain)	1983	1,521	2.44	Ton	3,711	120.00	445,000
	1982	2,022	2.55	Ton	5,156	105.00	541,000
Sorghum (Silage)	1983	552	33.0	Ton	18,216	22.00	401,000
	1982	518	30.0	Ton	15,540	35.00	544,000
Baled Straw	1983			Ton	35,904	46.20	1,659,000
(Wheat, Alfalfa, Bermuda, etc.)	1982			Ton	43,129	30.00	1,294,000
Sudan Grass Hay	1983	10,410	4.6	Ton	47,886	70.00	3,352,000
	1982	7,254	5.3	Ton	38,446	42.50	1,634,000
Sugar Beets	1983	36,264	22.30	Ton	808,687	40.64	32,865,000
	1982	33,169	22.45	Ton	744,644	36.18	26,941,000
Wheat	1983	109,676	2.95	Ton	323,544	140.00	45,296,000
	1982	170,110	2.89	Ton	491,617	122.10	60,027,000
A = 500 LBS./Bale		B = Includes Government Payment		TOTAL: 1983		255,976,000	
C = Included in Total Pasture		# = Pasture One Time		TOTAL: 1982		241,614,000	



## VEGETABLE CROPS 1982-1983

	YEAR	ACRES	PER ACRE	UNIT	TOTAL	PER UNIT	VALUE
Asparagus	1983	2,161	1.41	Ton	3,047	2,318.34	7,064,000
	1982	1,892	1.62	Ton	3,058	2,149.89	6,574,000
Broccoli	1983	5,194	3.56	Ton	18,491	540.31	9,991,000
	1982	3,071	3.57	Ton	10,975	889.39	9,761,000
Cabbage	1983	800	6.33	Ton	5,064	200.23	1,014,000
	1982	467	13.24	Ton	6,186	200.77	1,242,000
Cantaloupes (Fall and Spring)	1983	19,240	6.15	Ton	118,326	320.87	37,967,000
	1982	12,828	8.15	Ton	104,511	314.21	32,838,000
Carrots	1983	10,008	20.80	Ton	208,166	160.00	33,307,000
	1982	6,412	21.75	Ton	139,461	174.14	24,286,000
Lettuce	1983	38,366	10.82	Ton	415,120	171.15	71,048,000
	1982	30,288	12.61	Ton	381,823	352.63	134,642,000
Lettuce (Other)	1983	483	10.68	Ton	5,158	363.38	1,874,000
	1982	200	8.95	Ton	1,790	648.00	1,160,000
Melons (Other) (Fall and Spring)	1983	3,759	7.73	Ton	29,057	273.48	7,947,000
	1982	5,062	3.39	Ton	17,181	228.21	3,921,000
Onions (Market)	1983	2,940	12.92	Ton	37,985	139.47	5,298,000
	1982	3,003	17.70	Ton	53,140	188.41	10,012,000
Salad Products (Lettuce and Cabbage)	1983	39,200	.31	Ton	12,152	53.07	645,000
	1982	30,718	.66	Ton	20,486	297.18	6,088,000
Squash (Banana, Table, Mediterranean, Varieties)	1983	1,416	7.28	Ton	10,308	438.55	4,521,000
	1982	962	5.83	Ton	5,611	533.24	2,992,000
Tomatoes (Cannery)	1983	3,135	36.80	Ton	115,368	54.39	6,275,000
	1982	2,317	36.21	Ton	83,898	55.00	4,614,000
Tomatoes (Market)	1983	1,375	10.88	Ton	14,960	420.00	6,283,000
	1982	1,363	7.93	Ton	10,808	687.06	7,426,000
Watermelons	1983	4,778	9.29	Ton	44,388	166.00	7,368,000
	1982	5,142	10.76	Ton	55,314	124.20	6,870,000
Onions (Processor)	1983	5,372	16.00	Ton	85,952	78.00	6,704,000
	1982	3,185	17.5	Ton	55,328	77.00	4,260,000
*Mixed Vegetables	1983			Ton	37,612	327.16	12,305,000
	1982			Ton	19,208	468.50	8,999,000
TOTAL: 1983						219,611,000	
TOTAL: 1982						267,743,000	

\*Mixed Vegetables - Cauliflower, Celery, Chinese Vegetables, Corn, Cucumbers, Rapini, Rutabagas, Turnips, Garlic Processor, Bell Pepper, Spinach, Beans

## FRUIT AND NUT CROPS 1982-1983

	YEAR	ACRES	PER ACRE	UNITS	TOTAL	PER UNIT	VALUE
Dates	1983	442	1.44	Ton	636	3,243.71	2,065,000
	1982	450	2.03	Ton	913	2,860.00	2,613,000
Grapefruit	1983	452	10.63	Ton	4,805	42.02	202,000
	1982	552	9.82	Ton	5,420	45.18	245,000
Lemons	1983	1,846	9.02	Ton	16,651	110.86	1,846,000
	1982	1,910	5.44	Ton	10,390	26.09	271,000
Oranges	1983	632	6.90	Ton	4,361	69.94	305,000
	1982	638	3.40	Ton	2,169	38.80	84,000
Tangerines	1983	205	8.00	Ton	1,640	170.12	279,000
	1982	224	5.80	Ton	1,299	96.25	125,000
Mixed Citrus (Limes, ... Temples, Tangelos, etc.)	1983	102	8.00	Ton	816	170.34	139,000
	1982	144	5.80	Ton	835	96.24	80,000
Mixed Fruit and Nuts (Apricots, Peaches, Pecans, Nectarines, Plums)	1983	77	5.60	Ton	431	750.00	323,000
	1982	77	4.53	Ton	348	600.00	209,000
Citrus By-Products	1983			Ton	18,379	34.55	635,000
	1982			Ton	19,457	37.69	733,000
TOTAL: 1983						5,794,000	
TOTAL: 1982						4,360,000	

## LIVESTOCK 1982-1983

	Year	Head	Unit Gain	Unit	Total Gain	Per Unit	Value
Cattle	1983	500,472	7.31	CWT	3,658,450	63.63	232,787,000
	1982	501,678	6.09	CWT	3,055,383	68.95	210,669,000
Sheep	1983	195,864	.60	CWT	117,518	62.50	7,345,000
	1982	92,825	.72	CWT	66,834	55.93	3,738,000
Wool	1983			LBS	733,334	.56	411,000
	1982			LBS	394,506	.94½	373,000
Fish	1983			LBS	1,911,000	1.65	3,153,000
	1982			LBS	600,000	1.62	971,000
Misc. Livestock (Dairy & Swine)	1983						1,022,000
	1982						1,124,000
TOTAL: 1983							244,718,000
TOTAL: 1982							216,875,000

## APIARY PRODUCTS 1982-1983

	Year	Hives	Yield	Unit	Production	Per Unit	Value
Honey	1983	71,816	45.75	LBS	3,285,582	.55	1,807,000
	1982	65,287	47.72	LBS	3,115,496	.524	1,633,000
Wax	1983	71,816	1.05	LBS	75,407	1.40	106,000
	1982	65,287	.847	LBS	55,298	1.86	103,000
Pollination	1983	55,820		Colonies		15.75	879,000
	1982	58,758		Colonies		16.00	940,000
TOTAL: 1983							2,792,000
TOTAL: 1982							2,676,000

## SEED AND NURSERY 1982-1983

	Year	Acres	Per Acre	Unit	Total	Per Unit	Value
Alfalfa Seed	1983	15,471	478.3	LBS	7,399,779	1.00	7,400,000
	1982	10,075	387.4	LBS	3,903,055	.80	3,122,000
Bermuda Grass Seed	1983	12,356	789	LBS	9,748,884	.82½	8,043,000
	1982	14,197	900	LBS	12,777,300	.85	10,861,000
Wheat Seed	1983	3,043	5,520	LBS	16,797,360	.0775	1,302,000
	1982	6,804	6,131	LBS	41,715,324	.12	5,006,000
Misc. Seed (Field Crops)	1983			LBS			837,000
	1982			LBS			969,000
Vegetable, Flower Seeds & Nursery Stock	1983						5,867,000
	1982						5,906,000
Certified Seeds	1983						2,826,000
	1982						2,848,000
TOTAL: 1983							26,275,000
TOTAL: 1982							28,712,000





## RECAPITULATION 1983

	1981	1982	1983
Apiary Products	1,410,000	2,676,000	2,792,000
Field Crops	*303,909,000	241,614,000	255,976,000
Fruit and Nut Crops	6,242,000	4,360,000	5,794,000
Livestock and Dairy	225,990,000	216,875,000	244,718,000
Seed and Nursery	36,412,000	28,712,000	26,275,000
Vegetable Crops	153,939,000	267,743,000	219,611,000
<b>TOTAL</b>	<b>*727,902,000</b>	<b>761,980,000</b>	<b>755,166,000</b>

\* Adjusted Total

## MILLION DOLLAR CROPS FOR 1983

Cattle	\$ 232,787,000	Onion (Processor)	\$ 6,704,000
Alfalfa	104,695,000	Tomatoes (Market)	6,283,000
Lettuce	71,048,000	Tomatoes (Cannery)	6,275,000
Wheat	45,296,000	Vegetable, Flower	
Cantaloupes	37,967,000	Seed & Nursery Stock	5,867,000
Carrots	33,307,000	Onions (Market)	5,298,000
Sugar Beets	32,865,000	Squash	4,521,000
Cotton	32,120,000	Cotton Seed	4,081,000
Alfalfa Cube & Dehydrated	22,697,000	Sudan Grass Hay	3,352,000
Mixed Vegetables	12,305,000	Fish Products	3,153,000
Broccoli	9,991,000	Certified Seeds	2,826,000
Bermuda Grass Seed	8,043,000	Dates	2,065,000
Melons (Other)	7,947,000	Lettuce (Other)	1,874,000
Total Pasture	7,890,000	Lemons	1,846,000
Alfalfa Seed	7,400,000	Honey	1,807,000
Watermelons	7,368,000	Baled Straws	1,659,000
Sheep	7,345,000	Wheat Seed	1,302,000
Asparagus	7,064,000	Misc. Livestock	1,022,000
		Cabbage	1,014,000