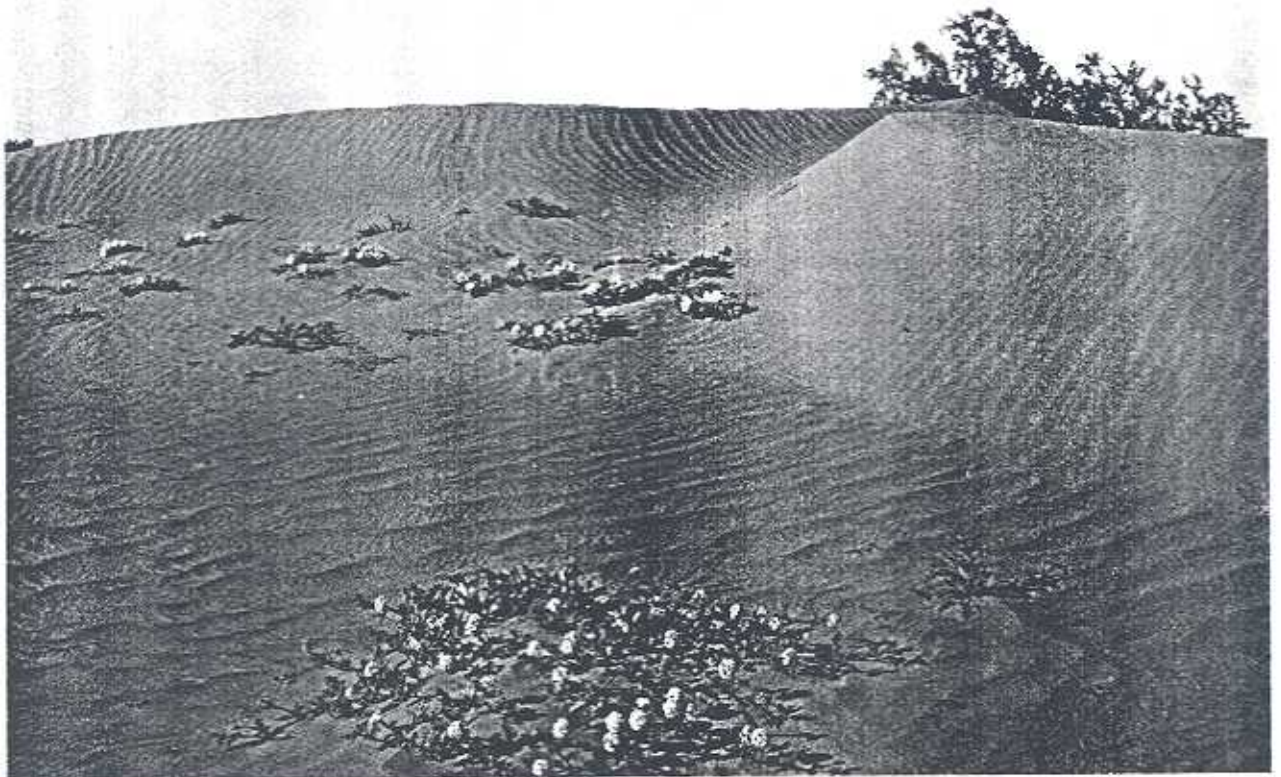


Agricultural Crop Report

COUNTY OF IMPERIAL

- 1961 -



*Office of the
Agricultural Commissioner*

Court House - El Centro



TO: THE HONORABLE BOARD OF SUPERVISORS
OF THE COUNTY OF IMPERIAL

and

CHARLES PAUL, DIRECTOR OF AGRICULTURE
STATE OF CALIFORNIA

I herewith submit the annual report on the gross value of agricultural production in the County of Imperial for 1961 as required in Section 65.5 of the Agricultural Code.

The gross value of agricultural production in Imperial County again reached record proportions. It will be noted, however, that the increase in value of the commodities produced is a result of the tremendous growth of the livestock feeding industry in the County.

Most of the major units of production, such as field crops, vegetables and fruit and nut crops had a decline in value of commodities produced, and it will be noted that although the production in many of these crops exceeded that of 1960, prices received were substantially lower, so that the gross value, as well as the net return to farmers, was less in 1961. New wealth produced by agriculture is the principal industry in Imperial County, and a reflection of lower prices in any one particular commodity is readily felt throughout the community.

This report, in accordance with Section 65.5, attempts to reflect the gross value of agriculture as it is sold in Imperial County, and in most cases, includes the cost of harvesting, packaging and marketing.

We have endeavored to make this report as accurate as possible, and to the many hundreds of farmers that participated in this report, we express our thanks, and to Inspector, Ralph McCanna, who compiled the report, we give due credit.

Respectfully submitted,

A handwritten signature in cursive script that reads "Claude M. Finnell".

CLAUDE M. FINNELL

Agricultural Commissioner

IMPERIAL COUNTY BOARD OF SUPERVISORS

CHAS. W. KILGORE, Chairman

TOM BOLEY
RAY LANGLEY

/

EARL CAVANAH
SI CAREY

VEGETABLE CROPS - 1960-1961

	Year	Acres	Per Acre	Unit	Total	Per Unit	Value
Asparagus	1961	1,725	1.7	ton	2,930	\$481.00	\$ 1,409,000
	1960	1,701	.91	ton	1,556	447.50	696,236
Cabbage	1961	2,010	10.6	ton	21,300	44.00	937,200
	1960	2,707	10.	ton	27,070	50.00	1,353,500
Carrots	1961	3,010	20.2	ton	60,800	85.00	5,168,000
	1960	5,895	18.	ton	106,110	27.38	2,905,122
Cucumber	1961	353	4.7	ton	1,660	92.00	152,700
	1960	270	7.8	ton	2,120	131.85	279,527
Garlic	1961	455	4.8	ton	2,180	127.50	278,000
	1960	1,091	3.4	ton	3,709	120.00	445,080
Lettuce	1961	40,660	6.3	ton	256,200	61.25	15,692,000
	1960	40,257	7.4	ton	297,900	89.49	26,658,185
Cantaloupes	1961	4,490	5.75	ton	25,800	142.75	3,683,000
	1960	7,427	5.2	ton	38,620	90.98	3,513,544
Melons (other)	1961	115	4.3	ton	494	79.20	39,100
	1960	91	3.3	ton	300	107.26	32,178
Watermelons	1961	3,980	9.3	ton	37,000	52.84	1,955,000
	1960	4,628	9.5	ton	43,966	50.00	2,198,300
Onions (dry)	1961	1,170	11.6	ton	13,570	46.00	624,000
	1960	3,364		ton	2,659	40.00	106,360
Onions (dehydrated)	1961	1,430	8.	ton	11,400	36.00	410,400
	1960						
Romaine	1961	140	7.2	ton	1,010	48.90	49,400
	1960	76	8.6	ton	653	97.76	63,840
Squash	1961	590	6.5	ton	3,840	198.40	762,000
	1960	887	4.8	ton	4,260	169.96	724,000
Tomatoes	1961	2,600	7.3	ton	18,980	200.00	3,796,000
	1960	3,563	4.4	ton	15,700	247.54	3,886,369
Misc. Vegetables*	1961						688,000
	1960						685,000

Total 1961 — \$35,643,800
Total 1960 — 43,510,741

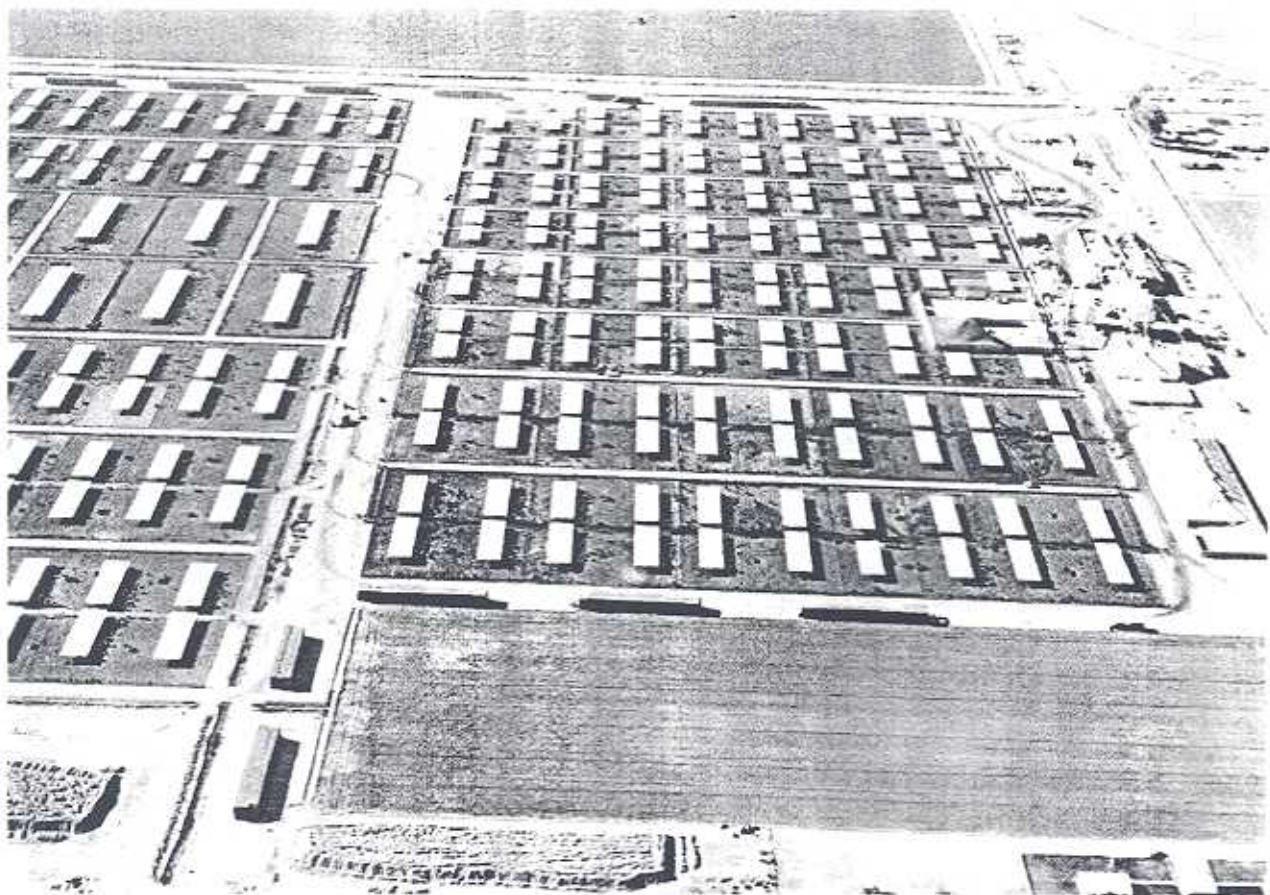
*Chinese Vegetables, Chili, Green Corn, Okra, Potatoes, Broccoli, Rapini, Celery, Endive, Bib Lettuce, Fava Beans.

FRUIT & NUT CROPS - 1960-1961

	Year	Acreage	Per Acre	Unit	Total	Per Unit	Value
Dates	1961	106	4.5	ton	477	\$300.00	\$ 143,100
	1960	106	2.4	ton	254	300.00	76,200
Grapefruit	1961	712	10.	ton	7,120	30.00	214,000
	1960	759	8.25	ton	6,262	48.00	300,576
Oranges, Valencia	1961	294	8.9	ton	2,620	181.00	343,000
	1960	363	13.3	ton	4,828	85.00	410,000
Tangerines	1961	313	3.8	ton	1,190	108.00	128,000
	1960	280	5.4	ton	1,512	200.00	302,400
Mixed Fruits*	1961						54,700
	1960						84,720

Total 1961 — \$ 882,800
Total 1960 — 1,174,276

*Pecans, Grapes and Lemons



LIVESTOCK & POULTRY - 1960-1961

	Year	Head	Unit Gain	Unit	Total	Per Unit	Value
Cattle	1961	485,000	3.90	cwt	1,892,000	\$23.40	\$44,273,000
	1960	341,500	3.15	cwt	1,075,725	24.68	26,548,839
Sheep	1961	248,000	.6	cwt	148,800	17.68	2,631,000
	1960	240,042	.6	cwt	144,025	19.50	2,808,487
Hogs	1961	5,500	1.66	cwt	9,130	18.60	170,000
	1960	10,200		head	10,200	36.70	374,340
Chickens (broiler)	1961	20,800	3.	lb.	624,000	.24	15,000
	1960	3,650		each	3,650	.75	2,737
Chickens (other)	1961	21,600		each	21,600	.20	4,320
	1960	20,265		each	20,265	.30	6,079
Eggs	1961			doz	420,000	.36	151,200
	1960			doz	362,720	.37	134,206
Milk	1961			cwt	205,000	5.14	1,054,000
	1960			cwt	207,083	5.28	1,094,000
Milk (Manufactured)	1961			cwt	19,700	2.92	57,500
	1960			cwt	25,025	2.83	71,000
Wool	1961	280,000	.033	cwt	9,360	56.90	532,600
	1960			cwt	8,360	51.00	426,360

Total 1961 — \$48,888,620

Total 1960 — 31,466,102

APIARY PRODUCTS - 1960-1961

	Year	Apiaries	Production	Unit	Per Unit	Value
Honey	1961	54,000	3,240,000	lbs.	\$.11	\$ 356,400
	1960		3,678,640	lbs.	.095	349,470
Wax	1961	54,000	40,500	lbs.	.45	18,250
	1960		36,785	lbs.	.45	16,553
Pollination	1961		9,000	colonies	4.25	38,250
	1960		9,000	colonies	3.50	31,500

Total 1961 — \$ 412,900

Total 1960 — 397,523

23

FIELD CROPS - 1960-1961

	Year	Acres	Per Acre	Unit	Total	Per Unit	Value
Barley	1961	88,200	1.75	ton	154,000	\$47.00	\$ 7,238,000
	1960	82,603	1.3	ton	107,384	44.00	4,724,896
Cotton Lint	1961	51,187	2.75	500# bale	141,000	162.50	22,912,000
	1960	60,250	2.8	500# bale	163,700	151.20	24,751,440
Cotton Seed	1961			ton	47,500	43.00	2,042,000
	1960			ton	64,047	43.00	2,754,000
Flax Seed	1961	9,570	40.	56# bu.	382,800	3.52	1,347,000
	1960	16,200	34.	56# bu.	550,800	3.25	1,790,100
Hay, Alfalfa	1961	171,000	5.6	ton	958,000	21.00	20,118,000
	1960	157,394	5.5	ton	865,667	28.00	24,238,676
Pasture	1961	216,126				11.10	2,399,000
	1960	205,452				11.75	2,414,061
Screenings	1961			ton	1,275	17.50	22,300
	1960			ton	1,622	17.25	27,979
Silage (Sorghum)	1961	8,360	20.	ton	167,000	5.00	835,000
	1960	6,647	17.	ton	112,999	5.00	564,995
Sorghum, Grain	1961	32,900	1.9	ton	62,500	44.00	2,750,000
	1960	25,896	2.	ton	51,792	43.00	2,227,056
Straw	1961	122,000		ton	58,300	12.30	717,000
	1960	98,803	.5	ton	49,402	12.25	605,174
Sugar Beets	1961	45,579	22.3	ton	1,016,000	14.08	14,305,000
	1960	48,058	19.9	ton	956,354	14.00	13,388,956

Total 1961 — \$74,685,000

Total 1960 — 77,487,354

SEED CROPS - CERTIFIED - 1960-1961

	Year	Acres	Per Acre	Unit	Total	Per Unit	Value
Barley (Reg.)	1961						
	1960	195	3,937	lbs.	767,705	.0325	\$ 24,950
Barley (Cert.)	1961	1,018	3,407	lbs.	3,468,000	.03	104,000
	1960	668	2,664	lbs.	1,779,552	.03	53,366
Wheat	1961	12	2,733	lbs.	32,800	.04	1,312
	1960	63	2,914	lbs.	183,583	.0525	9,638
Flax (Cert.)	1961	40	3,671	lbs.	147,000	.085	12,500
	1960	284	2,271	lbs.	644,964	.075	48,372
Flax (Reg.)	1961						
	1960	98	2,031	lbs.	199,038	.09	17,913
Oats	1961	69	2,365	lbs.	163,000	.056	9,130
	1960						

Total 1961 — \$126,942

Total 1960 — 154,259

SEED CROPS - NON-CERTIFIED

	Year	Acres	Per Acre	Unit	Total	Per Unit	Value
Barley	1961	1,948	3,840	lbs.	7,480,000	\$.0272	\$ 203,460
	1960	1,244	2,700	lbs.	3,358,800	.0275	92,367
Oats	1961	440	2,150	lbs.	946,000	.035	33,110
	1960	140	2,400	lbs.	336,000	.036	12,096
Wheat	1961	65	3,250	lbs.	211,000	.037	7,810
	1960	85	2,800	lbs.	238,000	.048	11,424
Sorghum	1961	430	4,360	lbs.	1,875,000	.030	56,250
	1960	270	3,600	lbs.	972,000	.030	29,160
Flax	1961	590	3,360	lbs.	1,982,000	.075	148,650
	1960	1,200	2,290	lbs.	2,748,000	.07	192,360
Alfalfa	1961	26,230	350	lbs.	9,180,000	.260	2,386,800
	1960	30,848	310	lbs.	9,562,880	.281	2,687,169
Cotton	1961				8,000	250.00	2,000,000
	1960				9,620	210.00	2,020,200
Misc. Agri.	1961						64,442
	1960	533	600	lbs.	319,800	.072	23,025
Misc. Veg. and Flowers	1961						658,180
	1960						453,120

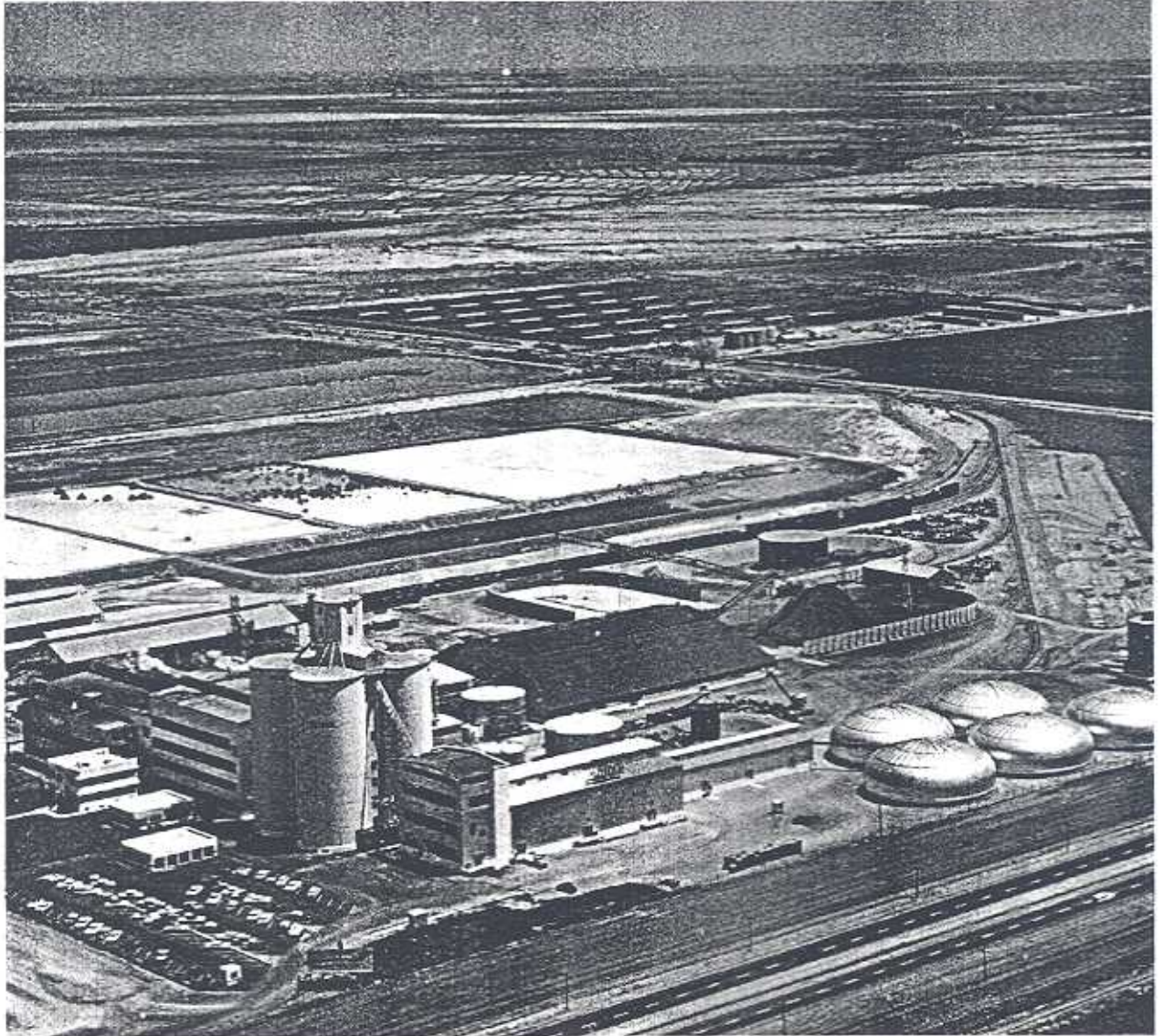
Total 1961 — \$5,558,702

Total 1960 — 5,520,921

4.

MILLION DOLLAR CROPS

ASPARAGUS	\$ 1,409,000	LETTUCE	\$15,692,000
BARLEY	7,238,000	ONIONS	1,034,400
CANTALOUPEs	3,683,000	PASTURE	2,399,000
CARROTS	5,168,000	SORGHUM	2,750,000
COTTON LINT	22,912,000	SUGAR BEETS	14,305,000
COTTON, SEED	2,042,000	TOMATOES	3,796,000
FLAX, SEED	1,347,000	WATERMELONS	1,955,000
HAY, ALFALFA	20,118,000	SEED CROPS	5,685,644



RECAPITULATION

	1960	1961
FIELD CROPS	\$ 77,487,354	\$ 74,685,000
VEGETABLE CROPS	43,510,741	35,643,800
LIVESTOCK and POULTRY	31,466,102	48,888,620
FRUIT and NUT CROPS	1,174,276	882,800
SEED CROPS	5,675,180	5,685,644
APIARY PRODUCTS	397,523	412,900
TOTALS	\$159,711,176	\$166,193,764